

How do I move?

Am I longer than 4 cm?

Here is a millipede



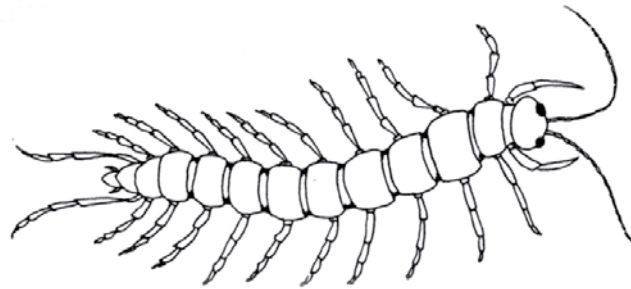
Where was I found?

What else do you know about me?

How do I move?

Am I longer than 4 cm?

Here is a centipede



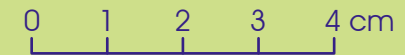
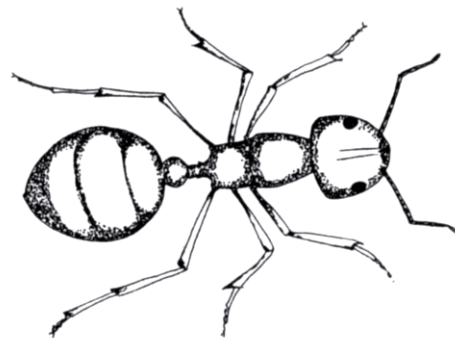
Where was I found?

What else do you know about me?

How do I move?

Am I longer than 4 cm?

Here is an ant



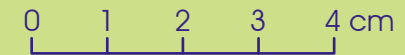
Where was I found?

What else do you know about me?

How do I move?

Am I longer than 4 cm?

Here is a fly



Where was I found?

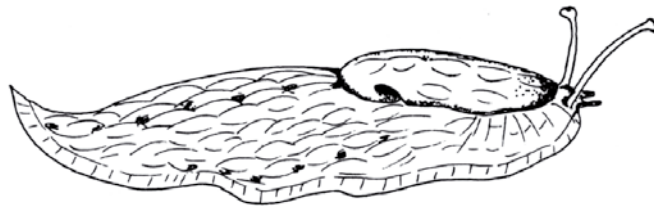
What else do you know about me?

How do I move?

Am I longer than 4 cm?

Here is a slug

0 1 2 3 4 cm



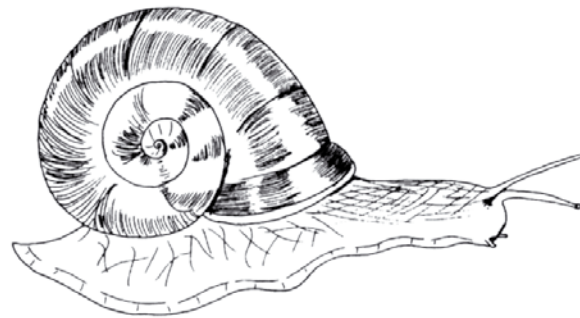
Where was I found?

What else do you know about me?

How do I move?

Am I longer than 4 cm?

Here is a snail



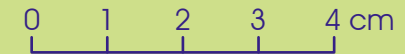
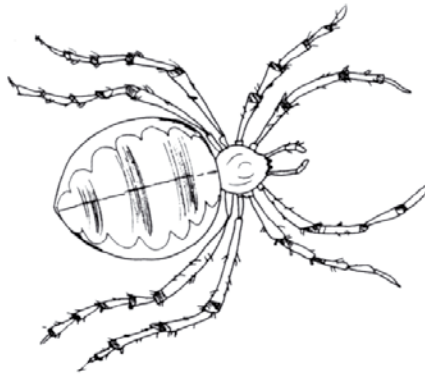
Where was I found?

What else do you know about me?

How do I move?

Am I longer than 4 cm?

Here is a spider



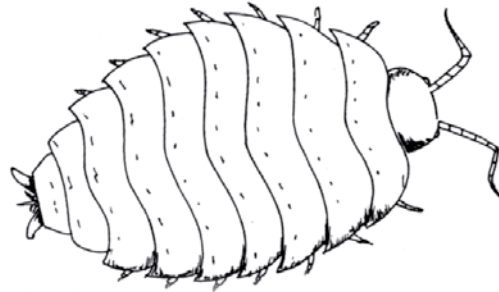
Where was I found?

What else do you know about me?

How do I move?

Am I longer than 4 cm?

Here is a woodlouse



Where was I found?

What else do you know about me?

How do I move?

Am I longer than 4 cm?

Draw your mini-animal



The drawing area is a white rounded rectangle with a black border. A pencil icon is positioned at the top right corner of the rectangle. Below the pencil, a scale bar is shown with markings at 0, 1, 2, 3, and 4 cm.

0 1 2 3 4 cm

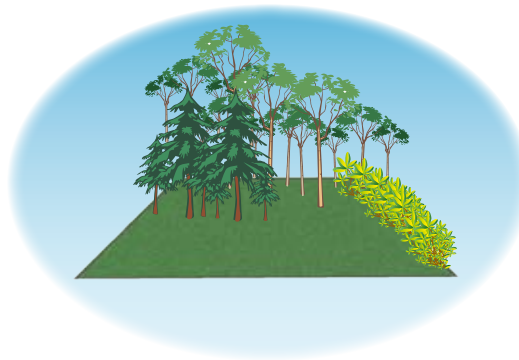
Where was I found?

What else do you know about me?

Looking for mini-animals — habitats

B1

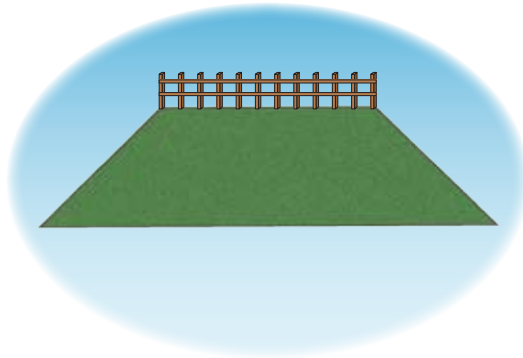
What we found in grass, hedges
and trees



Looking for mini-animals — habitats

B2

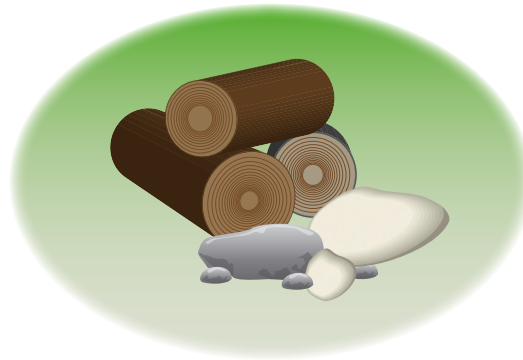
What we found in a field or lawn



Looking for mini-animals — habitats

B3

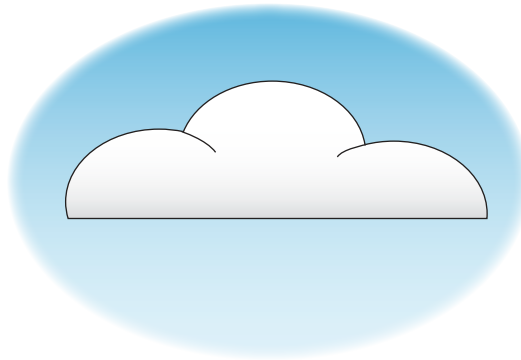
What we found under logs and stones



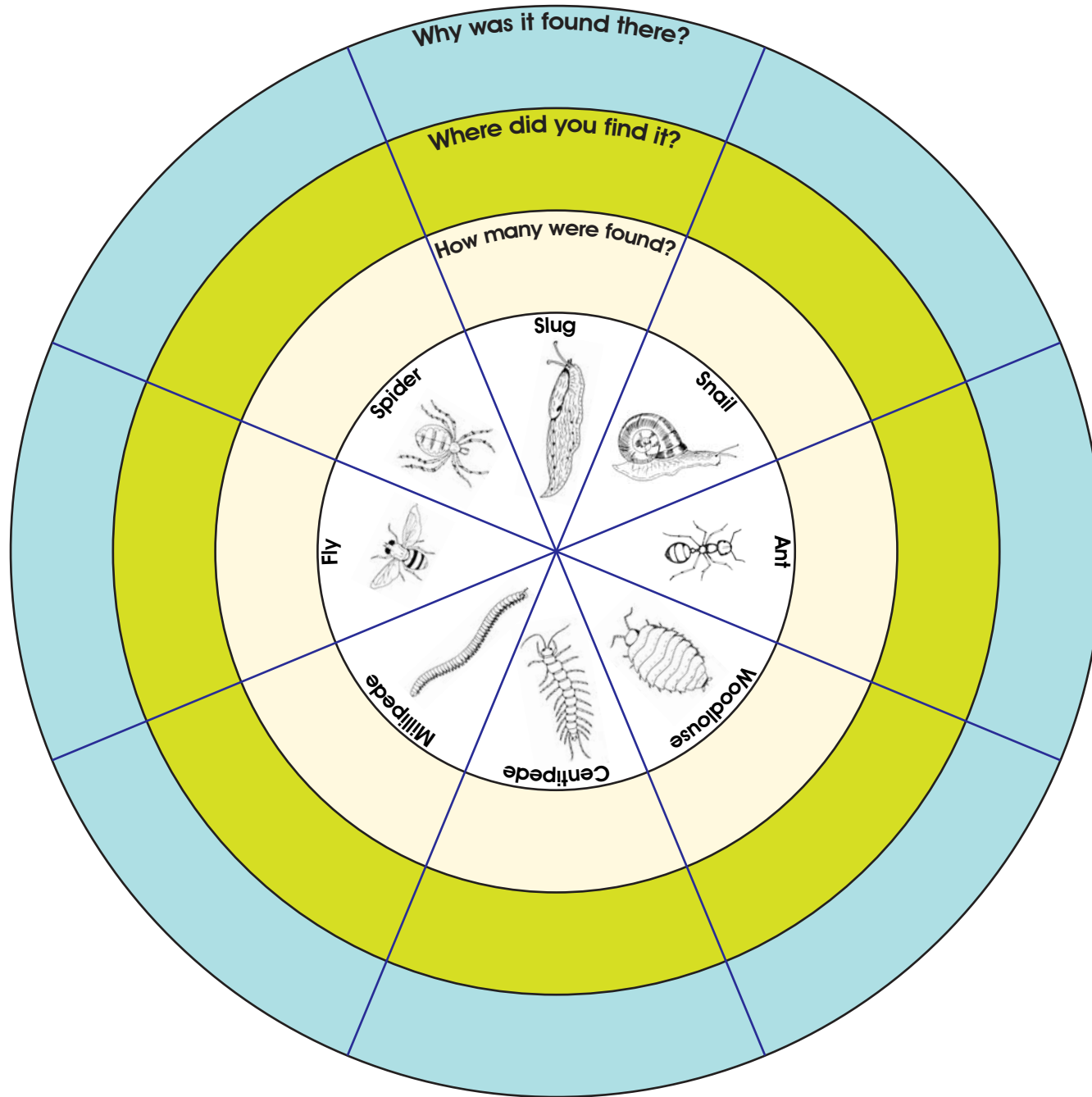
Looking for mini-animals — habitats

B4

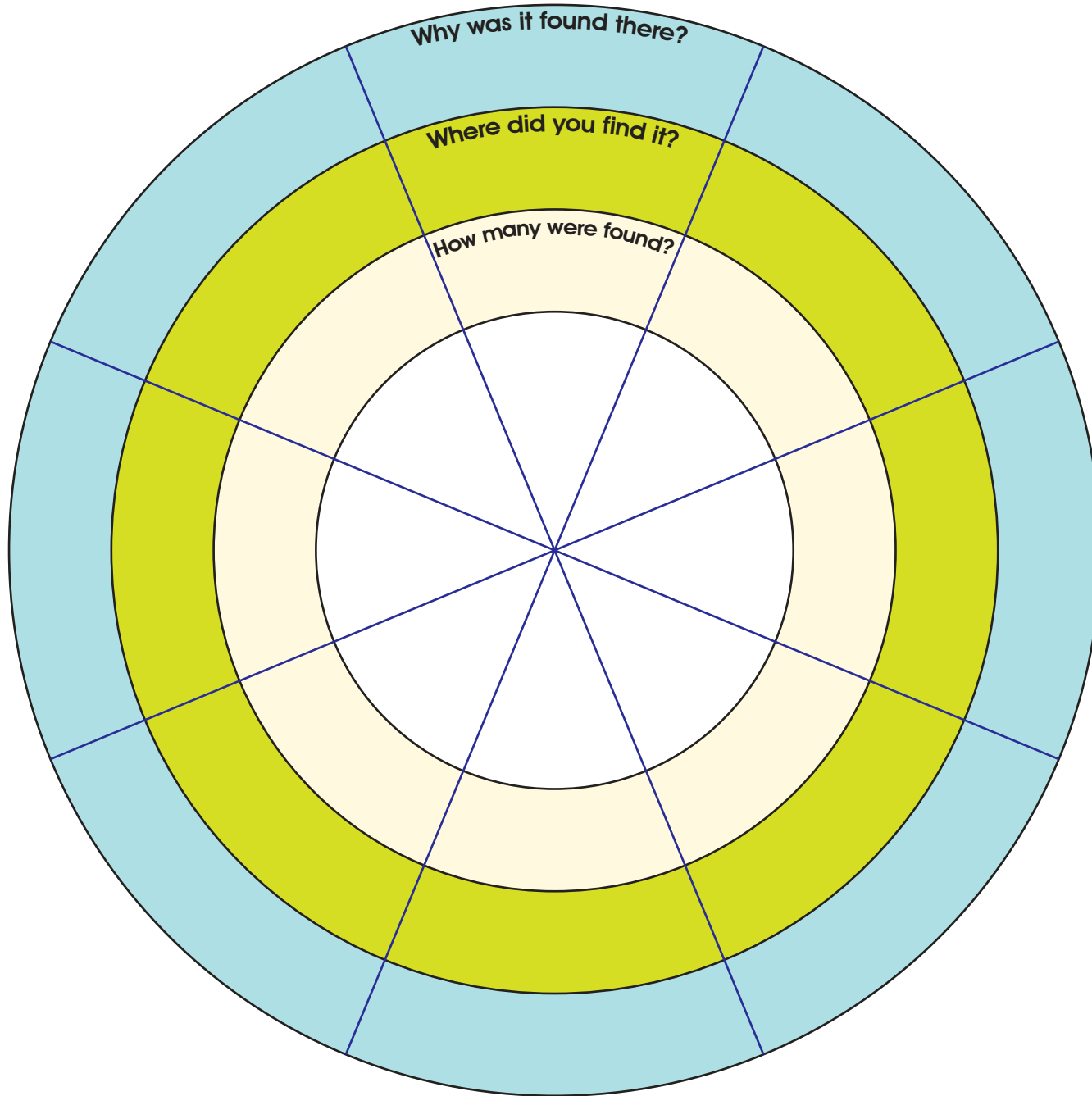
What we found flying in the air



Mini-animals hunt



Mini-animals hunt



Investigating the habitats of mini-animals

1. Where did you find the most mini-animals?

2. Where did you find the fewest mini-animals?

3. Which animals were hiding? Under a log or a stone for example.

4. Which animals were found on a tree, bush, flower or a hedge?

6. Did you see any mini-animals that were trying to catch or were eating other mini-animals?

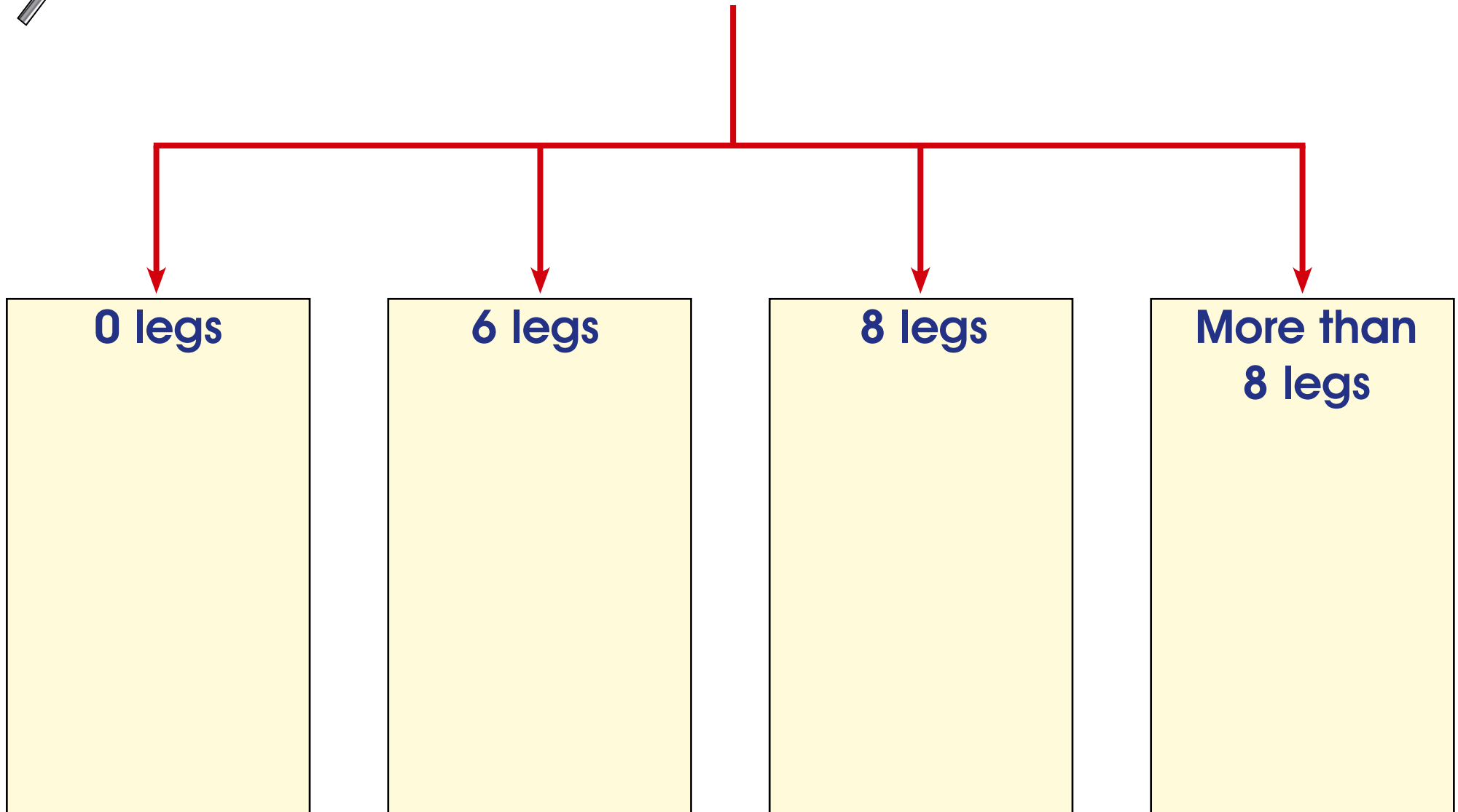
5. Which animals were flying?

1. _____
2. _____
3. _____
4. _____
5. _____
6. _____



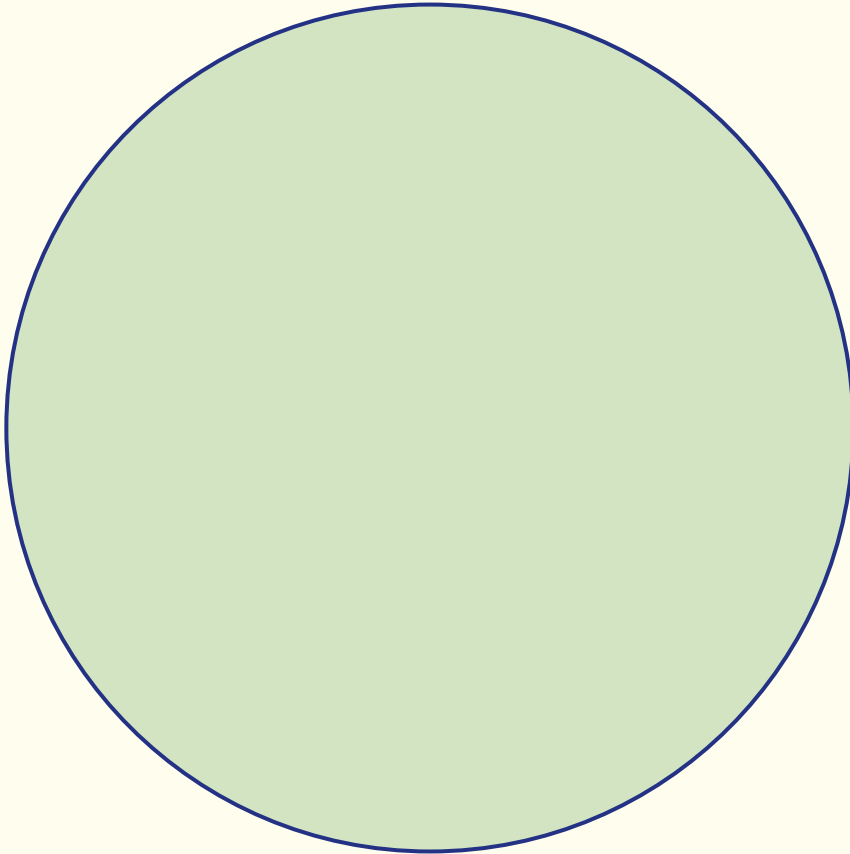


Sorting mini-animals by number of legs

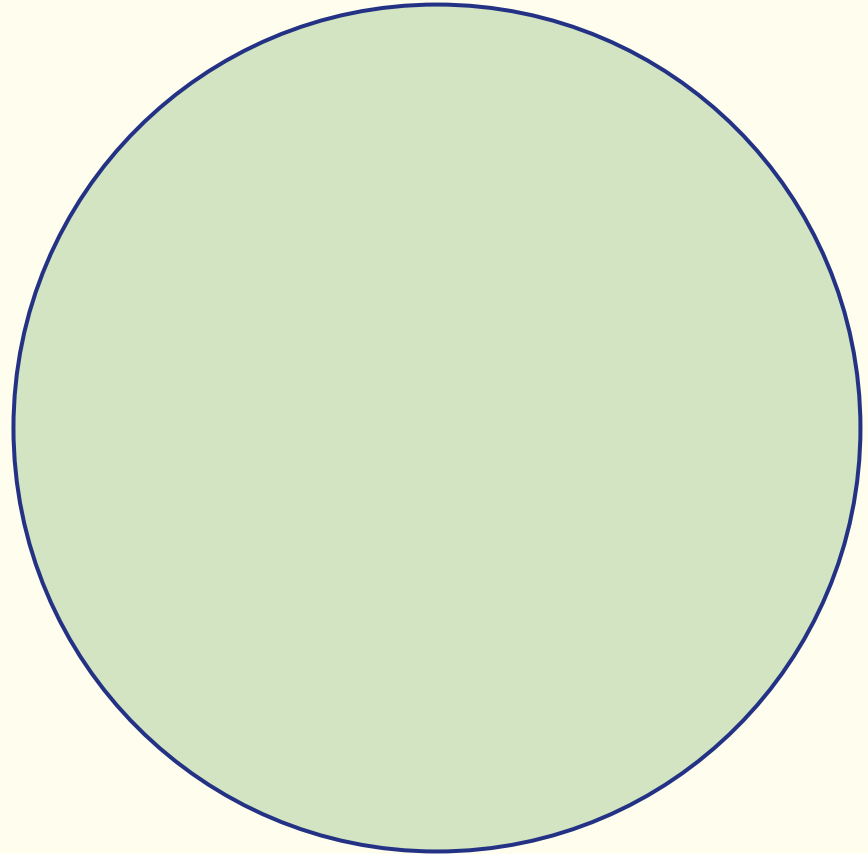




Wings

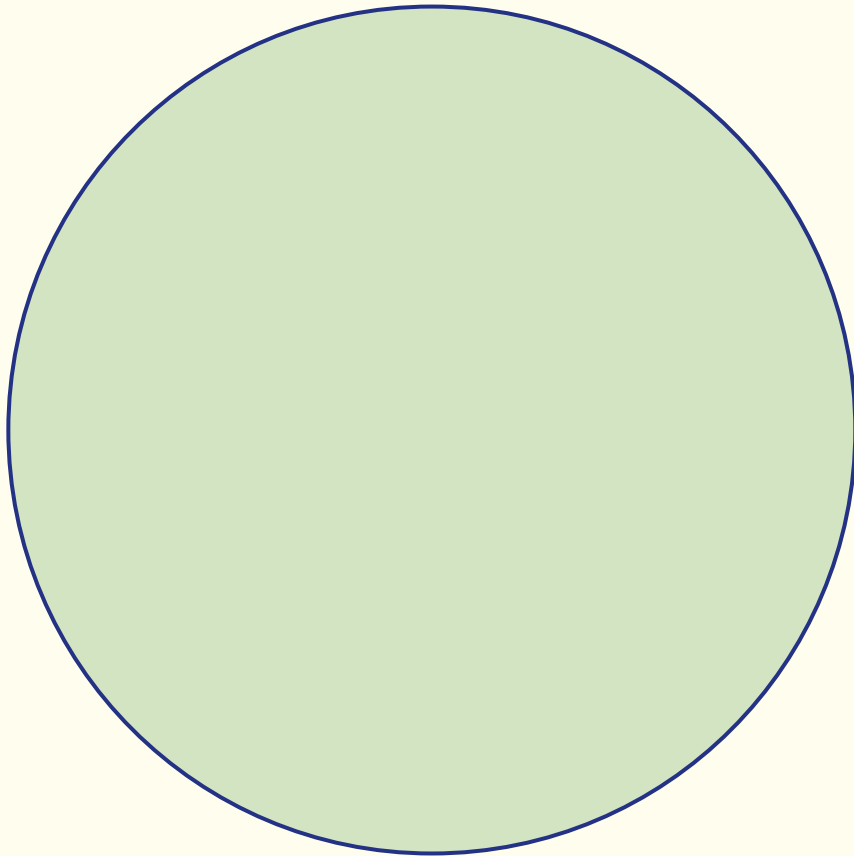


No wings

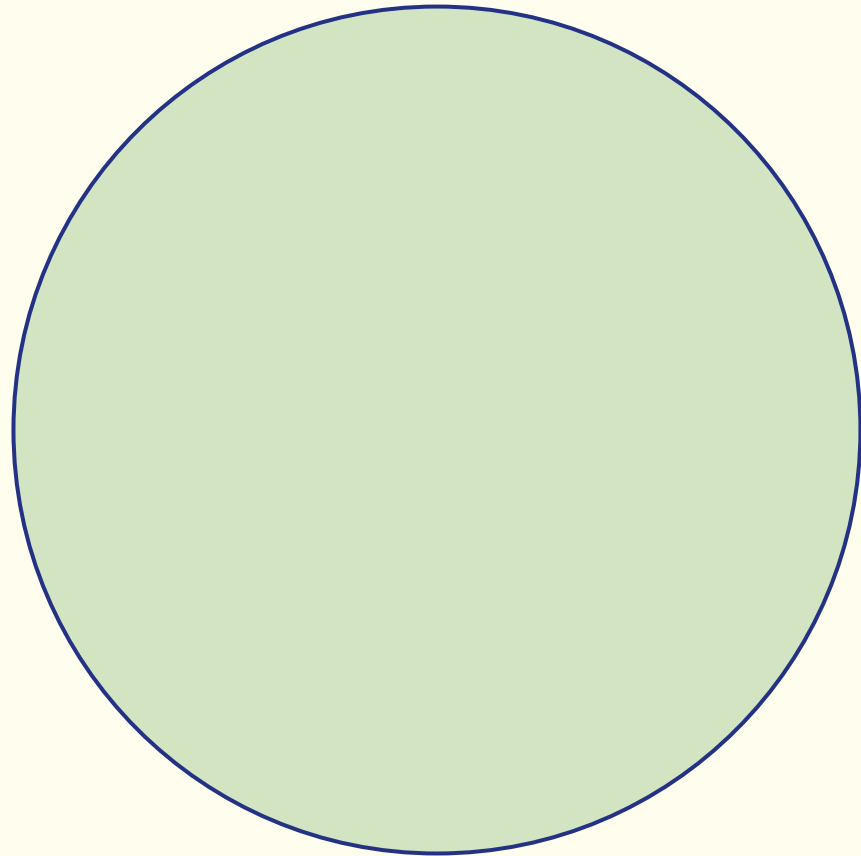




Lives in soil & dead leaves

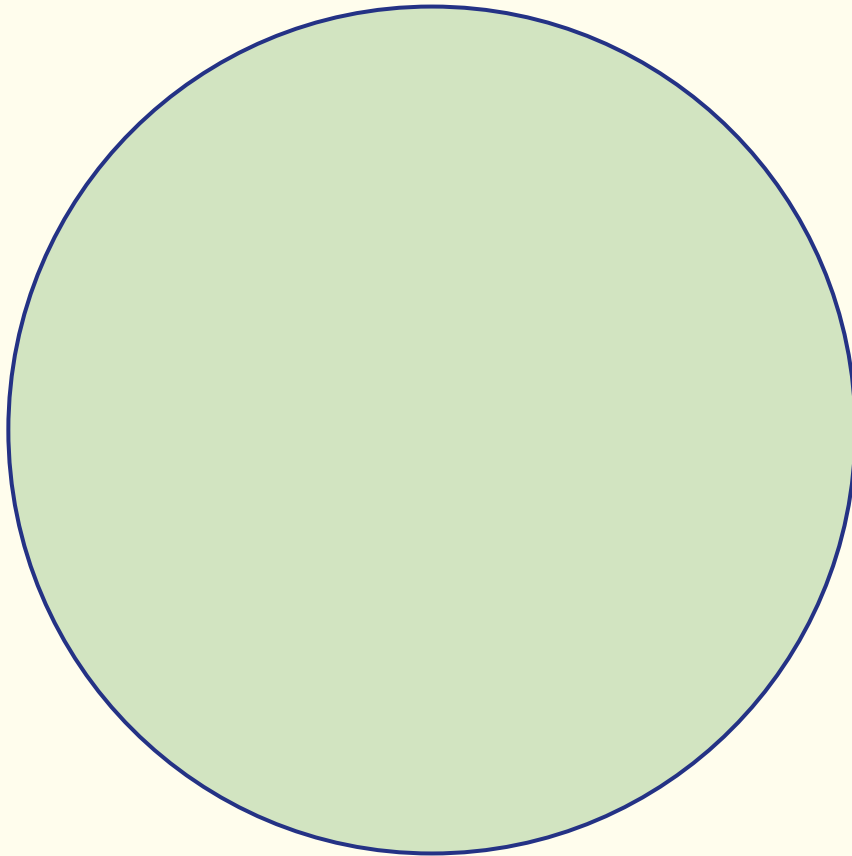


Does not live in soil

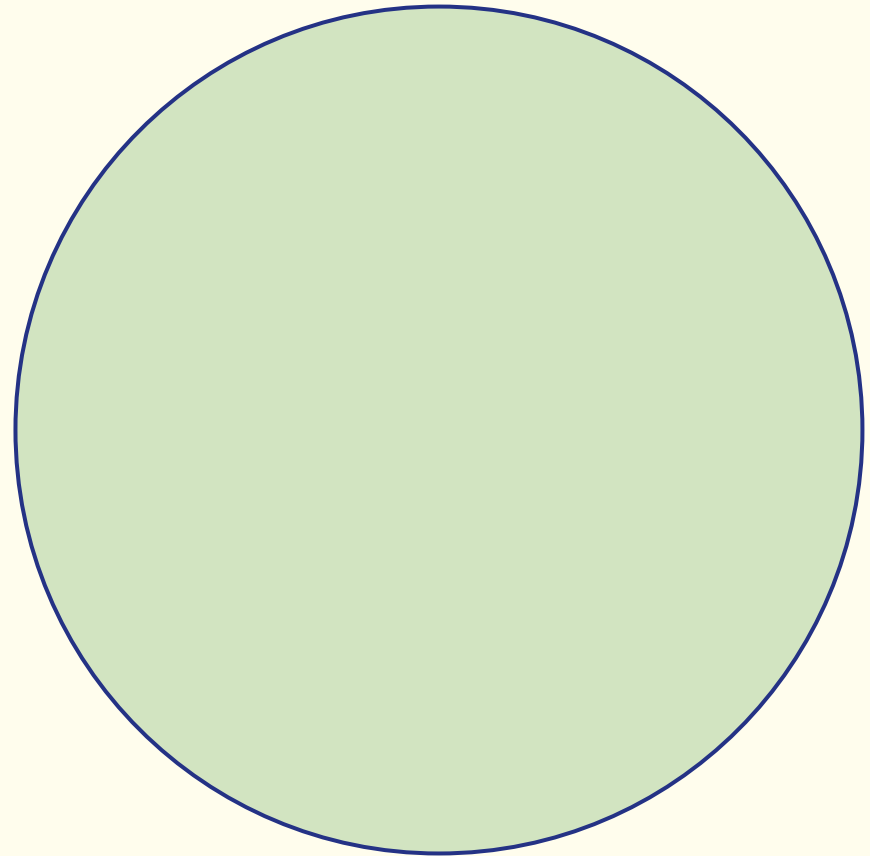


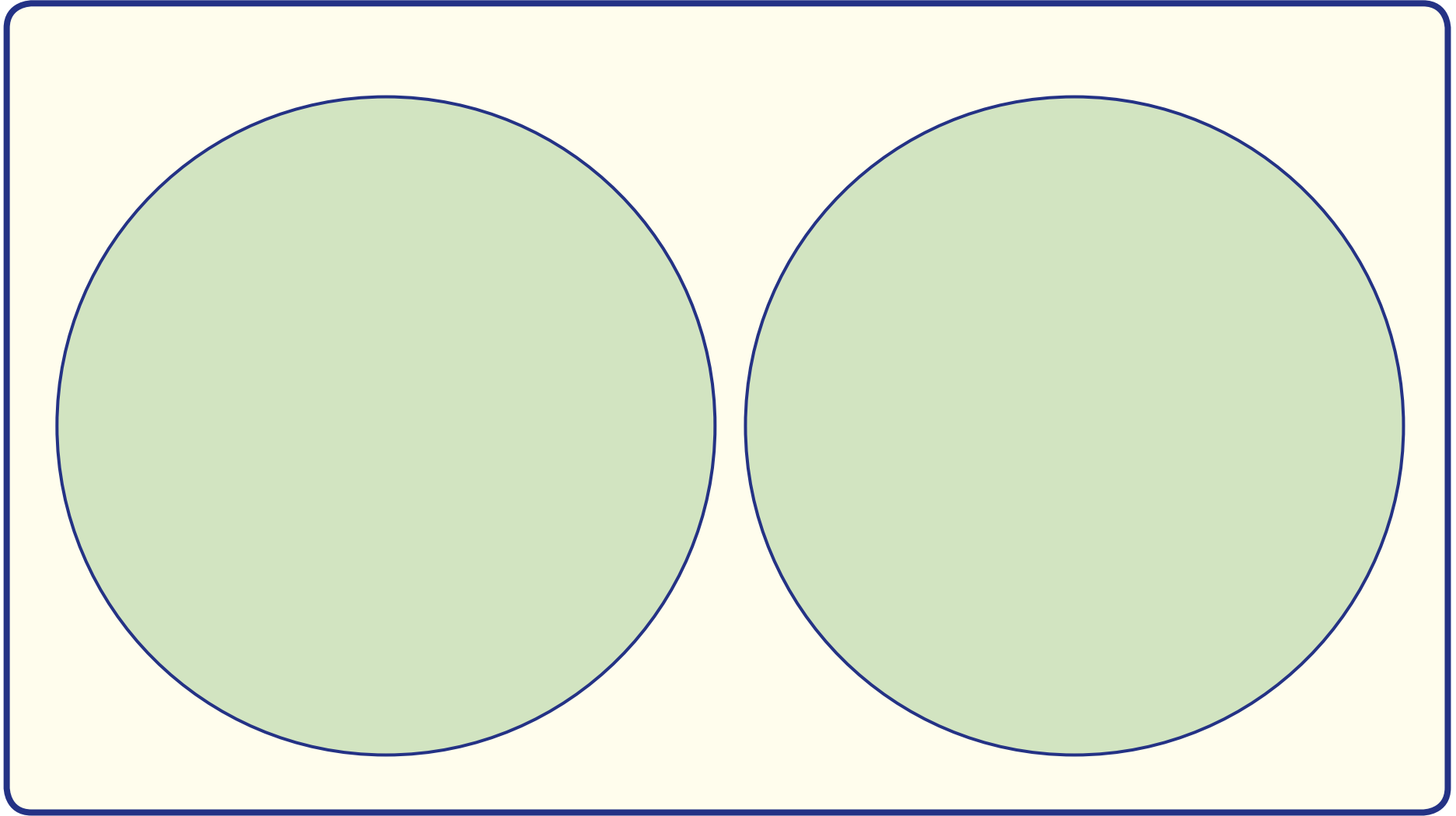


Has less than 6 legs



Has 6 or more legs





Sorting mini-animals

With legs	With no legs

With wings	With no wings

Predator	Not a predator

Mostly one colour	More than one colour



Sorting mini-animals

Sorting mini-animals			
Legs	No legs	Wings	No wings

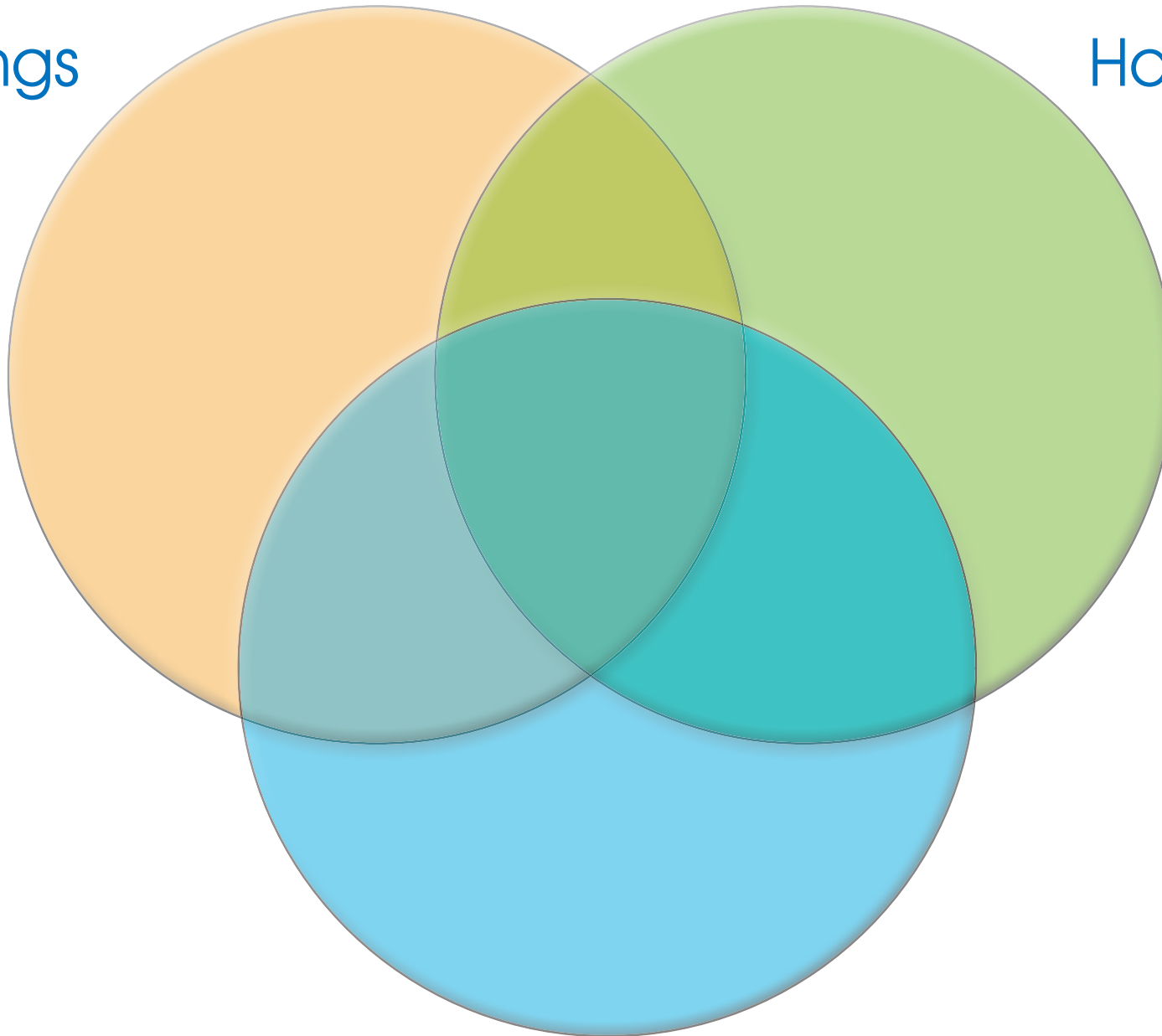
Sorting mini-animals

Yellow & black	Not yellow & black
Wings	
	No wings

Sorting mini-animals

Has wings

Has legs

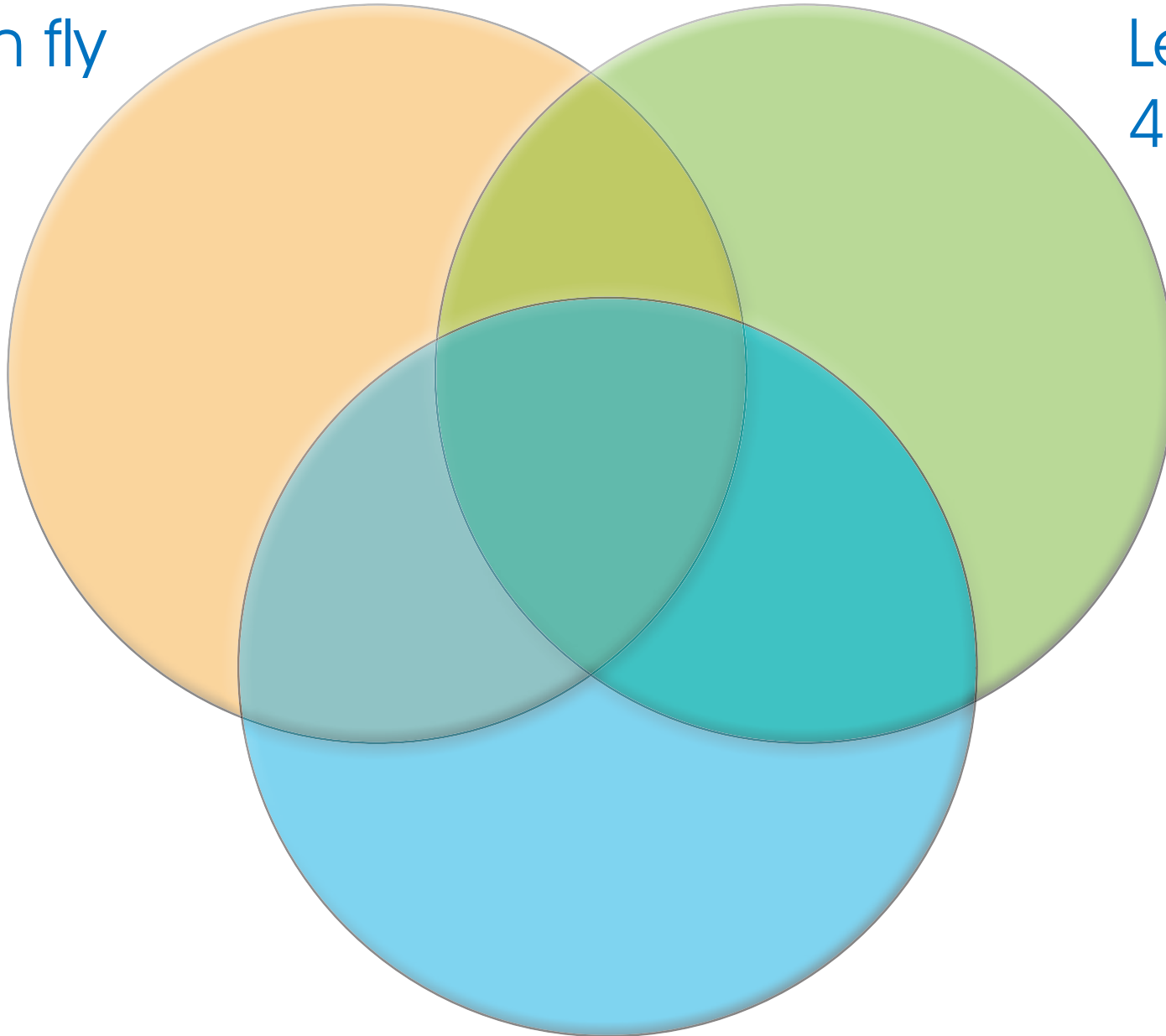


Is a predator

Sorting mini-animals

Can fly

Less than
4 cm long

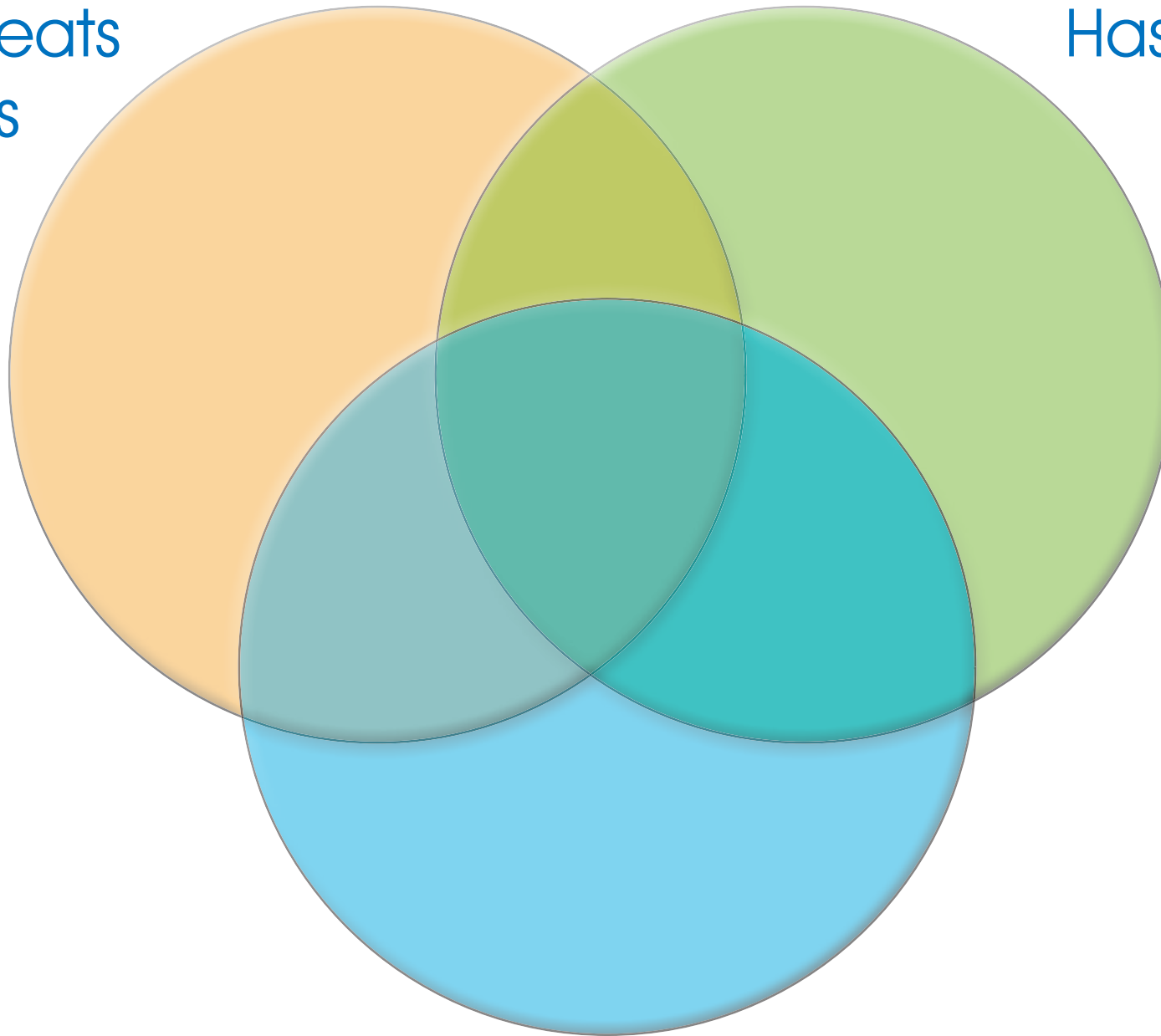


Mostly one colour

Sorting mini-animals

Only eats plants

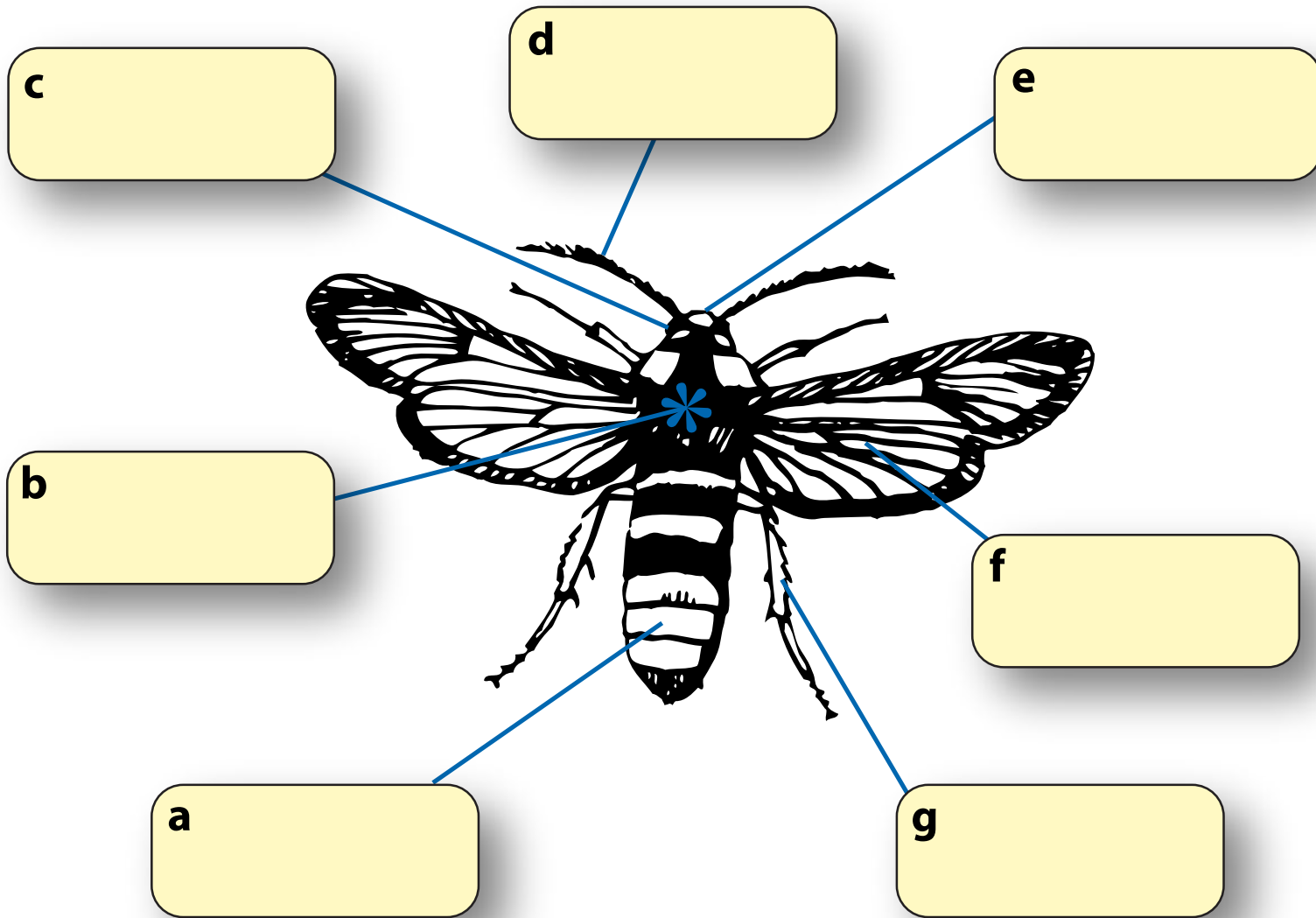
Has wings



More than one colour

Label the moth

Body parts



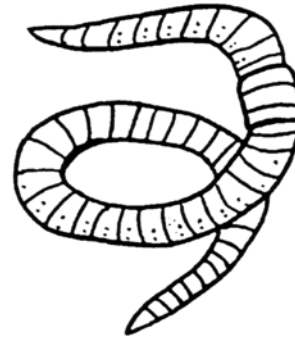
**Use
these
words:**

- thorax
- abdomen
- leg
- head
- antenna
- wing
- eye

NAME

Drawings of our twenty mini-animals. Useful for sorting, graph work, identification, etc..

Worm



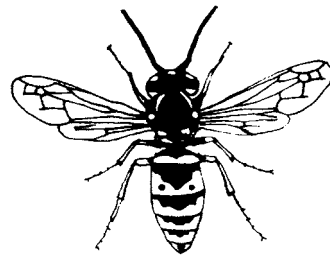
Millipede



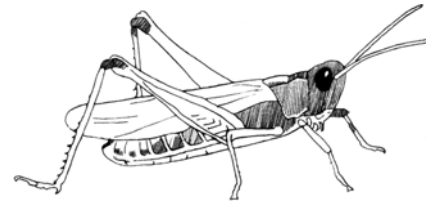
Bluebottle



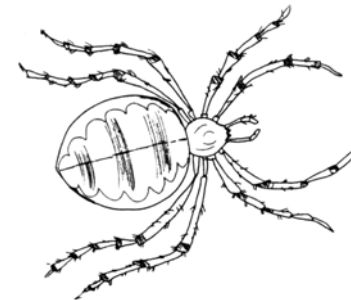
Wasp



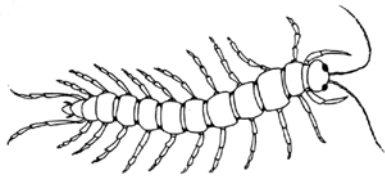
Grasshopper



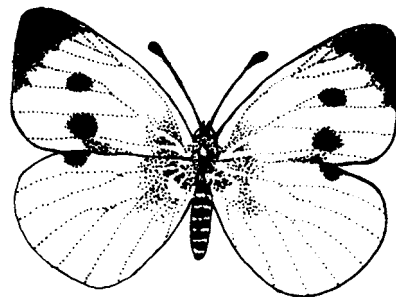
Spider



Centipede



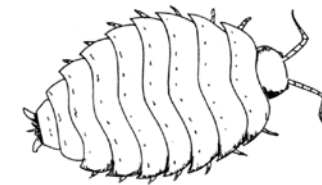
Butterfly



Ant



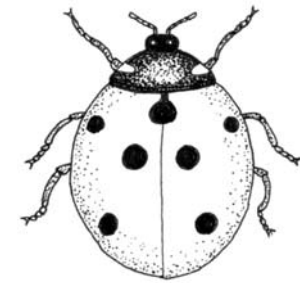
Woodlouse



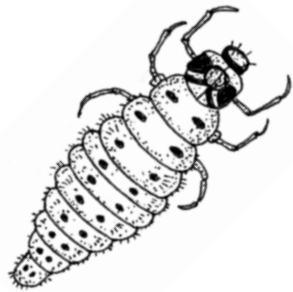
Bumblebee



Ladybird



Ladybird larva



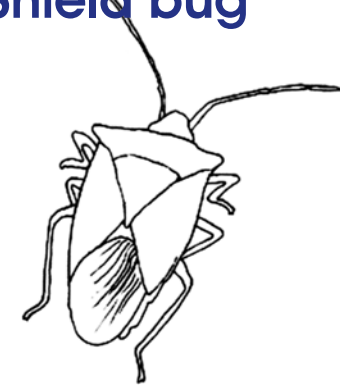
Crane fly



Dragonfly



Shield bug



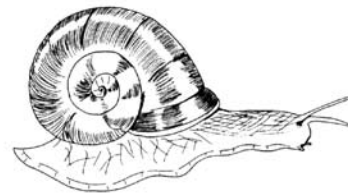
Aphid



Slug



Snail

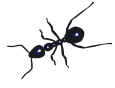


Caterpillar





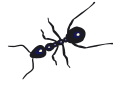
Mini-animals



Slug



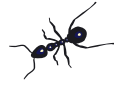
Mini-animals



Snail



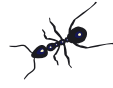
Mini-animals



Worm



Mini-animals

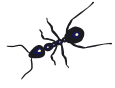


Millipede





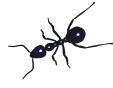
Mini-animals



Centipede



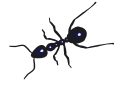
Mini-animals



Bluebottle



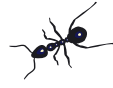
Mini-animals



Bumblebee



Mini-animals

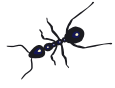


Grasshopper





Mini-animals



Spider



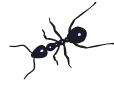
Mini-animals



Butterfly



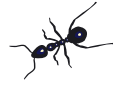
Mini-animals



Woodlouse



Mini-animals

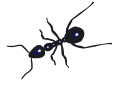


Aphid





Mini-animals



Ladybird



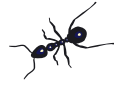
Mini-animals



Ladybird
larva



Mini-animals



Caterpillar



Mini-animals

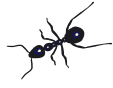


Crane fly





Mini-animals



Wasp



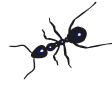
Mini-animals



Ant



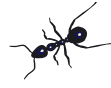
Mini-animals



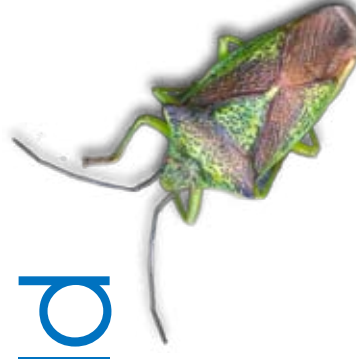
Dragonfly



Mini-animals

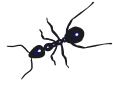


Shield
bug





Mini-animals



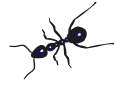
Slug



Mini-animals



Mini-animals



Snail

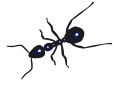


Mini-animals





Mini-animals



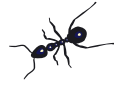
Worm



Mini-animals



Mini-animals



Millipede

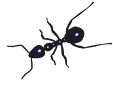


Mini-animals





Mini-animals



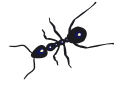
Centipede



Mini-animals



Mini-animals



Bluebottle



Mini-animals





Mini-animals



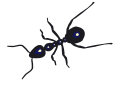
Bumble-
bee



Mini-animals



Mini-animals



Grasshopper

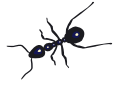


Mini-animals

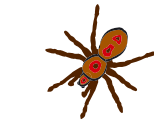




Mini-animals



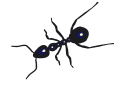
Spider



Mini-animals



Mini-animals



Butterfly

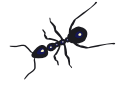


Mini-animals





Mini-animals



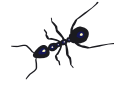
Woodlouse



Mini-animals



Mini-animals



Aphid

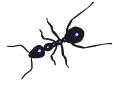


Mini-animals





Mini-animals



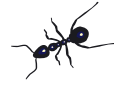
Ladybird



Mini-animals



Mini-animals



Ladybird
larva

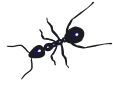


Mini-animals





Mini-animals



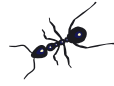
Caterpillar



Mini-animals



Mini-animals



Crane fly

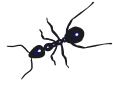


Mini-animals





Mini-animals



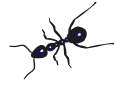
Wasp



Mini-animals



Mini-animals



Ant

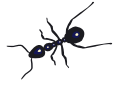


Mini-animals





Mini-animals



Dragonfly



Mini-animals



Mini-animals



Shield
bug



Mini-animals





Mini-animals



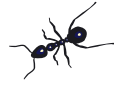
- found in gardens
- moves along a trail of slime
- shrinks if touched
- eats plants



Mini-animals



Mini-animals



- has a black and brown shell
- common in gardens
- eats leaves of many plants

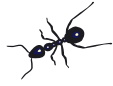


Mini-animals





Mini-animals



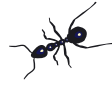
- common animal found in all soils in gardens and fields
- feeds on leaves and eats soil to get its food
- has no legs



Mini-animals



Mini-animals



- long, thin animal with even more legs than centipedes
- feeds on plants in the soil or on the surface



Mini-animals





Mini-animals



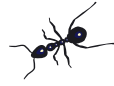
- long, thin animal with several pairs of legs
- hunts other animals in the soil at night
- hides under logs and stones during the day



Mini-animals



Mini-animals



- a common insect with a large blue shiny body and red eyes
- feeds on liquids and rotting food

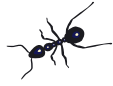


Mini-animals





Mini-animals



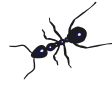
- yellow and black but has a light brown end to its body
- queen hibernates but emerges in spring to make a nest and lay eggs to develop into workers



Mini-animals



Mini-animals



- brown insect with large hindlegs for jumping
- eats grasses
- gives a loud call on a warm sunny day



Mini-animals





Mini-animals



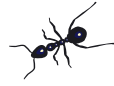
- female much larger than male
- female often hangs upside down in her web, which is often between two plants in the garden
- has a cross-shape on her body



Mini-animals



Mini-animals



- common in gardens and allotments
- female lays eggs on cabbage plants



Mini-animals





Mini-animals



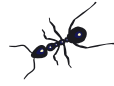
- flat, grey animal with 7 pairs of legs
- feeds on dead plants
- hides under logs and large stones during the day



Mini-animals



Mini-animals



- small blue/black insect
- found on roses
- sucks sap from plants
- is the prey of ladybirds and their larvae

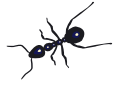


Mini-animals





Mini-animals



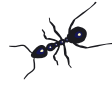
- has 7 black spots on the red wing cases
- common on our roses
- eats small green or black insects called aphids



Mini-animals



Mini-animals



- eats aphids and found on plants like roses
- blue/black in colour with yellow spots



Mini-animals





Mini-animals



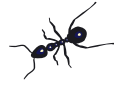
- has several pairs of legs for moving around
- green or brown in colour
- eats grasses and plants
- stays in soil during the winter



Mini-animals



Mini-animals



- has very long legs which can break off easily to escape from predators
- transparent wings
- seen in late summer and autumn

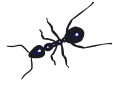


Mini-animals





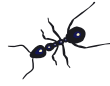
Mini-animals



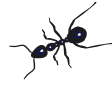
- yellow and black insect that can sting
- they nest in holes in trees and even garden sheds
- queen lays hundreds of eggs each year



Mini-animals



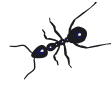
Mini-animals



- often nests under stones in gardens
- sometimes comes into our homes
- a few males and females have wings in the summer when they leave to start new nests



Mini-animals





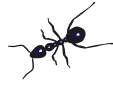
Mini-animals



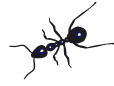
- large insect with transparent wings held away from its body when resting
- seen near ponds and canals
- has large eyes, blue in colour, to see its prey



Mini-animals



Mini-animals



- has the shape of a shield
- it sucks sap from leaves and is harmless
- green in colour so is well-camouflaged among leaves



Mini-animals

